

FINDING A PRIMARY CARE PROVIDER IN NOVA SCOTIA

October 2018 Report

Prepared for: Public

Reporting Cycle: Monthly



INTRODUCTION

Background

Nova Scotia Health Authority's Need a Family Practice (NAFP) registry was launched on November 1, 2016. The registry provides a coordinated and consistent provincial approach for tracking Nova Scotians who self identify as not having access to a primary care provider (family physician or nurse practitioner).

People can register themselves and their family members on the NAFP registry online or by telephone to be contacted by a participating practice/provider that is accepting new patients.

There are two main ways to find a primary care provider in Nova Scotia: (1) Through the Need a Family Practice (NAFP) Registry and; (2) through other routes, such as with local family practices.

 1. Through NSHA's Need a Family Practice Registry	 2. Through Other Routes
People can register themselves and their family members on the Need a Family Practice (NAFP) Registry online or by telephone to be contacted by a participating practice/provider that is accepting new patients.	People can find a primary care provider in other ways, such as with local family practices, through a family member who is an existing patient of a practice, or through a referral by another provider.

The term '**Found a Provider**' is used throughout the report to depict the approximate number of people in Nova Scotia who have found a primary care provider through the NAFP registry and through other routes as tracked by NSHA since November 2016. The term '**Not Yet Placed**' is used to depict the number of NAFP registrants who are seeking a primary care provider through means of registering for the NAFP registry.

The following report highlights the overall volume of people who have found a provider and who are not yet placed by geography (zone, network, and cluster), as well as by month, with data as of **September 25, 2018**.

Report Format

This report is divided into the following sections:

1. Total Provincial Volumes
2. Monthly Activity
3. Total Zonal Volumes – Found a Provider
4. Total Zonal Volumes – Not Yet Placed

1 | TOTAL PROVINCIAL VOLUMES



Total Provincial Volumes – Not Yet Placed

- As of the October 1, 2018 report, there were 58,046 registrants not yet placed with a family practice, which accounts for 6.3% of the total population in Nova Scotia (based on 2011 census data).
- This represents a 2.5% increase from the September 1, 2018 report where 56,630 registrants were not yet placed.



Total Provincial Volumes – Found a Primary Care Provider

- Over the month of September, 3,816 people found a primary care provider.
- The overall number of people in Nova Scotia who have found a primary care provider through the NAFP registry and through other routes, such as with local family practices, as tracked by NSHA since November 2016 is 32,834.

Figure 1 identifies the number of people in Nova Scotia who have found a primary care provider through the NAFP registry and through other routes as tracked by NSHA since November 2016.

Figure 1: Total Provincial Volumes – Found a Primary Care Provider

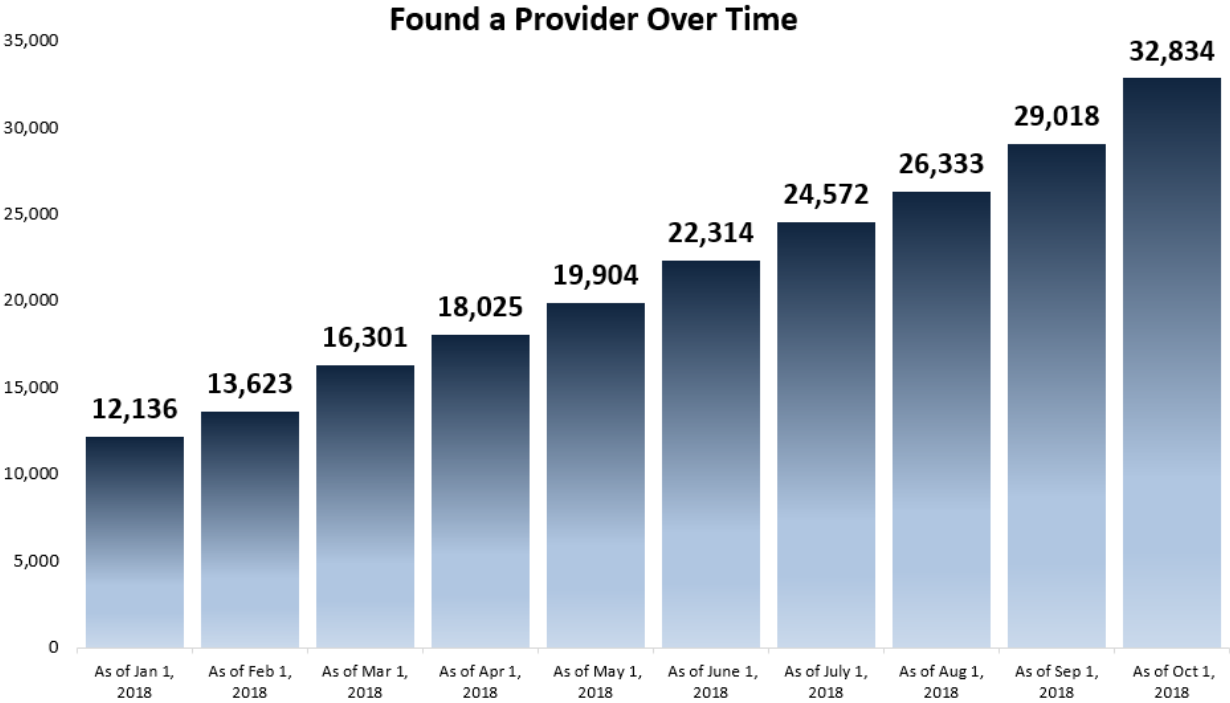
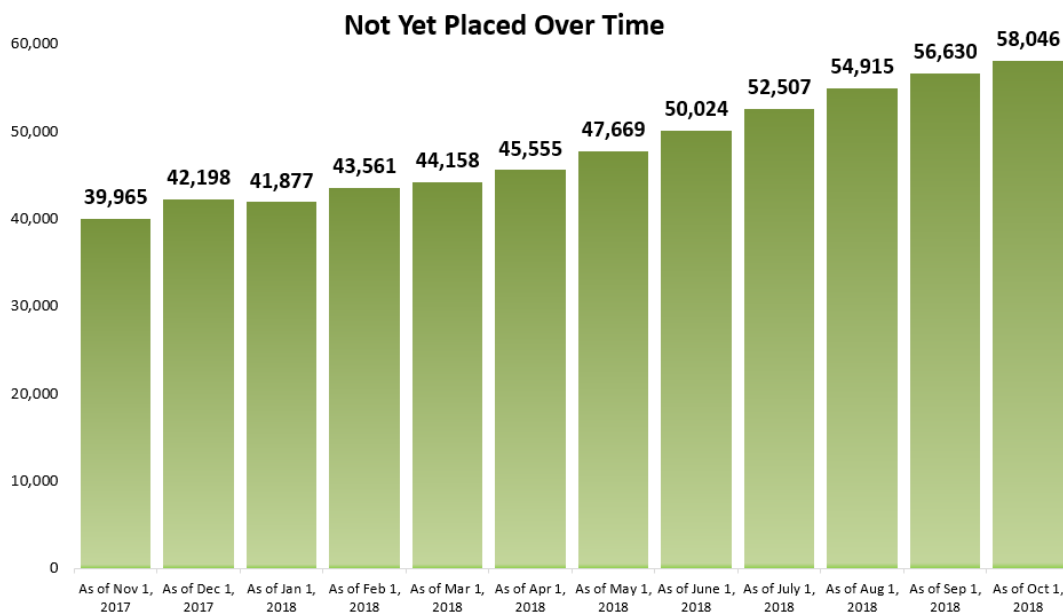


Figure 2 depicts the total number of registrants, by month, on the Need a Family Practice registry that are not yet placed with a family practice.

Figure 2: Total Provincial Volumes - Not Yet Placed by Month

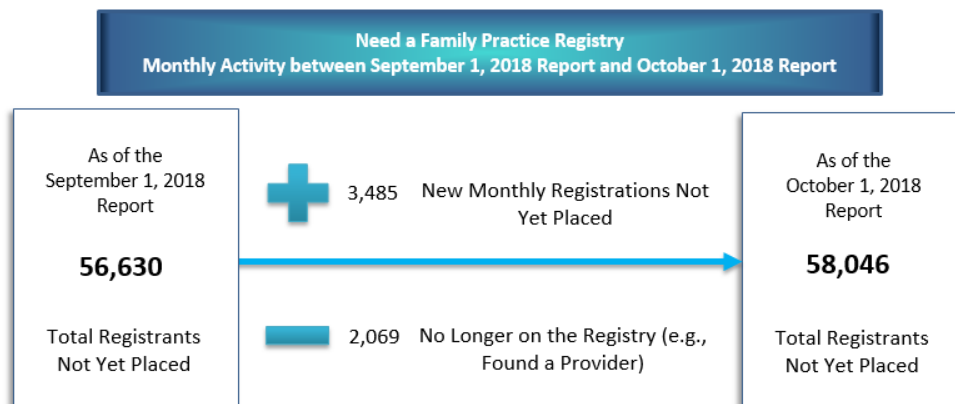


2 | MONTHLY ACTIVITY

Monthly Registry Activity

Specific to the NAFP registry during the month of September, 3,485 new registrations occurred (people who need a family practice) and 2,069 registrants were removed from the registry. People are removed from the registry because they were assisted with finding a family practice or for other reasons, such as already having found a provider when contacted by NSHA or having a duplicate registration. Figure 3 highlights the overall activity in the NAFP registry during the month of September 2018.


Figure 3: Provincial Volumes - Monthly Activity



Monthly Activity by Zone

Figure 4 provides a summary of the monthly activity that occurred between the September 1 report and the October 1 report.

Figure 4: Total Zonal Monthly Activity



		Sept 1, 2018			Oct 1, 2018	
		Sept 1, 2018	Oct 1, 2018	% Change	Oct 1, 2018	Oct 1, 2018
Central Zone	Halifax Regional Municipality, Eastern Shore and West Hants Areas	29,327	29,592	0.9%	7.2%	14,137
Eastern Zone	Cape Breton, Antigonish and Guysborough Areas	4,260	5,010	17.6%	3.1%	8,490
Northern Zone	Colchester, Cumberland, and Pictou County Areas	6,912	6,889	-0.3%	4.6%	4,734
Western Zone	Annapolis Valley, South West, and South Shore Areas	16,049	16,461	2.6%	8.4%	5,473
Unknown Geography	Unknown Geography	82	94	-	-	-
NOVA SCOTIA	TOTAL ACROSS NOVA SCOTIA	56,630	58,046	2.5%	6.3%	32,834

*Not yet placed percent of the population relative to the geography's population (i.e., zone)

3 | TOTAL ZONAL VOLUMES: FOUND A PRIMARY CARE PROVIDER

As of October 1, 32,834 Nova Scotians have found a primary care provider through the NAFP registry and through other routes as tracked by NSHA, since November 2016. Figure 5 depicts the breakdown of individuals, by zone, that have found a provider.

Figure 5: Total Zonal Volumes – Found a Primary Care Provider

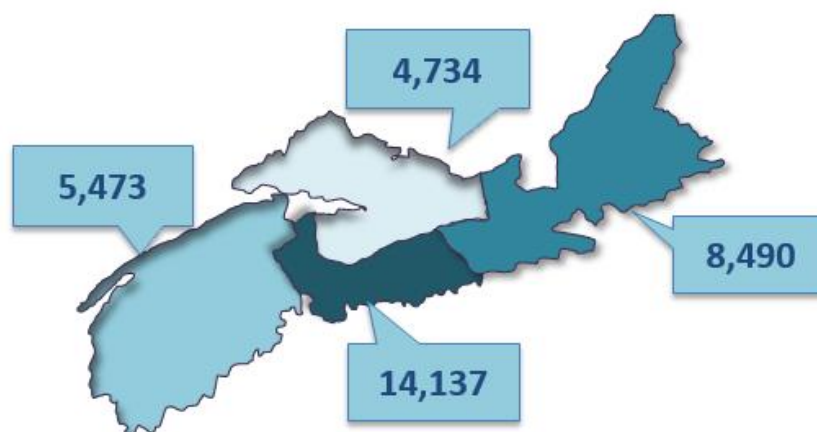


Table 1 provides the geographic breakdown of the number of people by zone, network, and cluster that found a primary care provider as reported through the NAFP registry or other routes tracked by NSHA, since November 2016.

Table 1: Total Zone, Network, and Cluster Volumes - Found a Primary Care Provider – October 1, 2018 Report

Total Zone, Network, and Cluster Volumes - Found a Primary Care Provider – October 1, 2018 Report	
Zone/Network/Cluster	Total # Found a Provider
Central	14,137
Bedford / Sackville	1,456
Bedford / Hammonds Plains	664
Fall River / Waverley	171
Sackville North / Beaverbank / Mount Uniacke	330
Sackville South	291
Dartmouth / Southeastern	3,832
Cole Harbour / Eastern Passage	259
Dartmouth East	2,124
Dartmouth North	579
Dartmouth South	392
Preston / Lawrencetown / Lake Echo	478
Eastern Shore Musquodoboit	1,145
Eastern Shore Musquodoboit	1,145
Halifax Peninsula / Chebucto	4,137
Armdale / Spryfield / Herring Cove	957
Clayton Park	588
Fairview	283
Halifax Chebucto	268
Halifax Citadel	261
Halifax Needham	292
Sambro Loop Area	336
Tantallon / Timberlea / St.Margaret's Bay	1,152
West Hants	3,567
West Hants	3,567
Eastern	8,490
Antigonish and Guysborough	181
Antigonish	113
Guysborough / Canso	56
Sherbrooke	12
Cape Breton County	6,264
Dominion / Glace Bay	1,475
Florence / Sydney Mines / North Sydney	477
New Waterford	559
Sydney	3,753
Inverness / Victoria / Richmond	2,045

Total Zone, Network, and Cluster Volumes - Found a Primary Care Provider – October 1, 2018 Report	
Zone/Network/Cluster	Total # Found a Provider
Baddeck / Whycomomagh	568
Cheticamp	540
Dingwall	5
Inverness	159
Port Hawkesbury / Isle Madame / L'Ardoise	773
Northern	4,734
Colchester East Hants	2,514
East Hants Corridor	5
Economy / Glenholme	6
Hants North	47
South Colchester	129
Truro and Area	2,327
Cumberland	761
Amherst	32
North Cumberland / North Shore	539
South Cumberland	61
Springhill	129
Pictou County	1,456
New Glasgow / Westville / Stellarton	1,392
Pictou West	64
Western	5,473
Annapolis and Kings	3,085
Annapolis Royal	46
Berwick	57
Kentville	1,574
Middleton	1,318
Wolfville	90
Queens and Lunenburg	969
Bridgewater	102
Chester	466
Liverpool	19
Lunenburg / Mahone Bay	382
Yarmouth / Shelburne / Digby	1,419
Digby / Clare / Weymouth	687
Shelburne / Lockeport	551
Yarmouth	181
Total Found a Provider	32,834

4 | TOTAL ZONAL VOLUMES – NOT YET PLACED

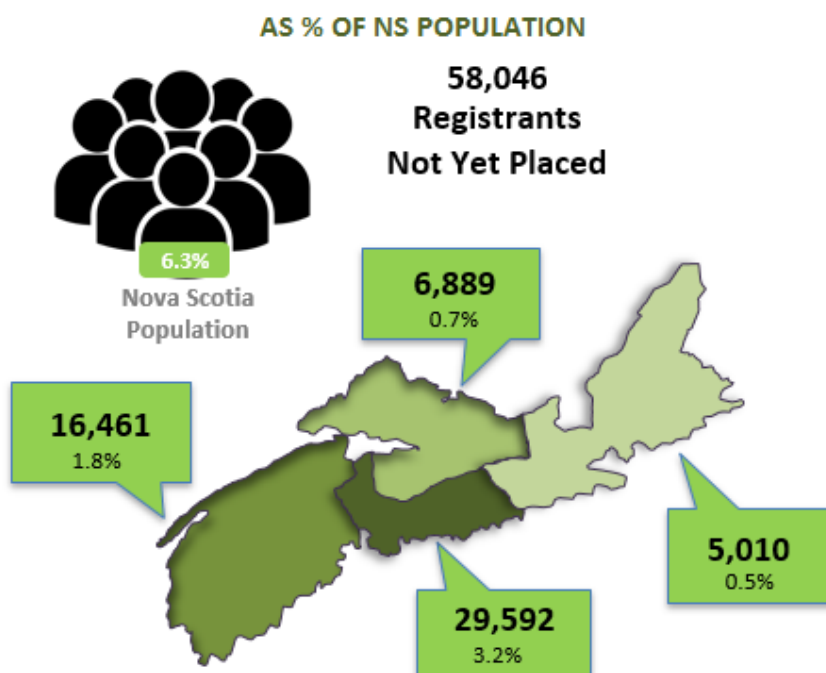
There were 58,046 registrants not yet placed with a family practice as of the October 1 report. The total volumes by zone* were:

- Central Zone: 29,592 registrations
- Eastern Zone: 5,010 registrations
- Northern Zone: 6,889 registrations
- Western Zone: 16,461 registrations

*Note: 94 registrations have an unknown zone

Figure 6 gives a high-level overview of the volume of NAFP registrants who are not yet placed, by zone, as a percent of the total Nova Scotia population based on 2011 census counts.

Figure 6: Total Zonal Volumes - Not Yet Placed as a Percent of the total Nova Scotia Population



*Note: 94 registrations have an unknown zone

Table 2 gives a detailed geographical breakdown of the volume of registrants not yet placed by zone, network, and cluster and as a percent of the corresponding Nova Scotia population by zone, network, and cluster.

Table 2: Total Volumes Not Yet Placed by Zone, Network, and Cluster and as Percent of Population by Zone, Network, and Cluster

Zone/Network/Cluster	Total # Not Yet Placed	Population by Zone, Network, Cluster (2011)	% of Population by Zone, Network, Cluster (2011)
Central	29,592	409,706	7.2%
Bedford / Sackville	4,977	87,838	5.7%
Bedford / Hammonds Plains	2,128	30,109	7.1%
Fall River / Waverley	644	13,994	4.6%

Zone/Network/Cluster	Total # Not Yet Placed	Population by Zone, Network, Cluster (2011)	% of Population by Zone, Network, Cluster (2011)
Sackville North / Beaverbank / Mount Uniacke	1,202	22,356	5.4%
Sackville South	1,003	21,379	4.7%
Dartmouth / Southeastern	10,419	115,427	9.0%
Cole Harbour / Eastern Passage	3,330	36,902	9.0%
Dartmouth East	1,746	23,616	7.4%
Dartmouth North	2,167	19,238	11.3%
Dartmouth South	2,725	24,719	11.0%
Preston / Lawrencetown / Lake Echo	451	10,952	4.1%
Eastern Shore Musquodoboit	852	18,165	4.7%
Eastern Shore Musquodoboit	852	18,165	4.7%
Halifax Peninsula / Chebucto	13,074	167,379	7.8%
Armdale / Spryfield / Herring Cove	1,525	23,502	6.5%
Clayton Park	3,578	34,439	10.4%
Fairview	1,400	15,789	8.9%
Halifax Chebucto	1,796	18,764	9.6%
Halifax Citadel	1,866	20,055	9.3%
Halifax Needham	1,929	20,192	9.6%
Sambro Loop Area	472	13,408	3.5%
Tantallon / Timberlea / St.Margaret's Bay	508	21,230	2.4%
West Hants	270	20,897	1.3%
West Hants	270	20,897	1.3%
Eastern	5,010	163,450	3.1%
Antigonish and Guysborough	342	27,548	1.2%
Antigonish	324	19,583	1.7%
Guysborough / Canso	14	5,122	0.3%
Sherbrooke	4	2,843	0.1%
Cape Breton County	4,033	102,397	3.9%
Dominion / Glace Bay	940	21,782	4.3%
Florence / Sydney Mines / North Sydney	1,380	19,870	6.9%
New Waterford	559	9,757	5.7%
Sydney	1,154	50,988	2.3%
Inverness / Victoria / Richmond	635	33,505	1.9%
Baddeck / Whycocomagh	24	5,382	0.4%
Cheticamp	5	4,688	0.1%
Inverness	36	4,667	0.8%
Port Hawkesbury / Isle Madame / L'Ardoise	566	16,035	3.5%
Dingwall	4	2,733	0.1%

Northern	6,889	150,409	4.6%
Colchester East Hants	3,487	69,991	5.0%
East Hants Corridor	651	12,860	5.1%
Economy / Glenholme	142	5,078	2.8%
Hants North	113	6,613	1.7%
South Colchester	171	10,001	1.7%
Truro and Area	2,410	35,439	6.8%
Cumberland	990	34,750	2.8%
Amherst	306	14,819	2.1%
North Cumberland / North Shore	548	8,395	6.5%
South Cumberland	55	4,311	1.3%
Springhill	81	7,225	1.1%
Pictou County	2,410	45,668	5.3%
New Glasgow / Westville / Stellarton	1,838	34,916	5.3%
Pictou West	572	10,752	5.3%
Unknown	2	-	0.0%
Western	16,461	196,284	8.4%
Annapolis and Kings	6,880	78,507	8.8%
Annapolis Royal	512	6,026	8.5%
Berwick	1,911	13,161	14.5%
Kentville	1,793	24,944	7.2%
Middleton	2,097	21,022	10.0%
Wolfville	567	13,354	4.2%
Queens and Lunenburg	5,790	59,384	9.8%
Bridgewater	2,734	28,417	9.6%
Chester	835	12,271	6.8%
Liverpool	1,781	10,908	16.3%
Lunenburg / Mahone Bay	440	7,788	5.6%
Yarmouth / Shelburne / Digby	3,791	58,393	6.5%
Digby / Clare / Weymouth	2,170	18,899	11.5%
Shelburne / Lockeport	534	14,506	3.7%
Yarmouth	1,087	24,988	4.4%
Unknown	94	-	0.0%
Total # Not Yet Placed	58,046	919,849	6.3%